
Trumpet in Bb

Piano

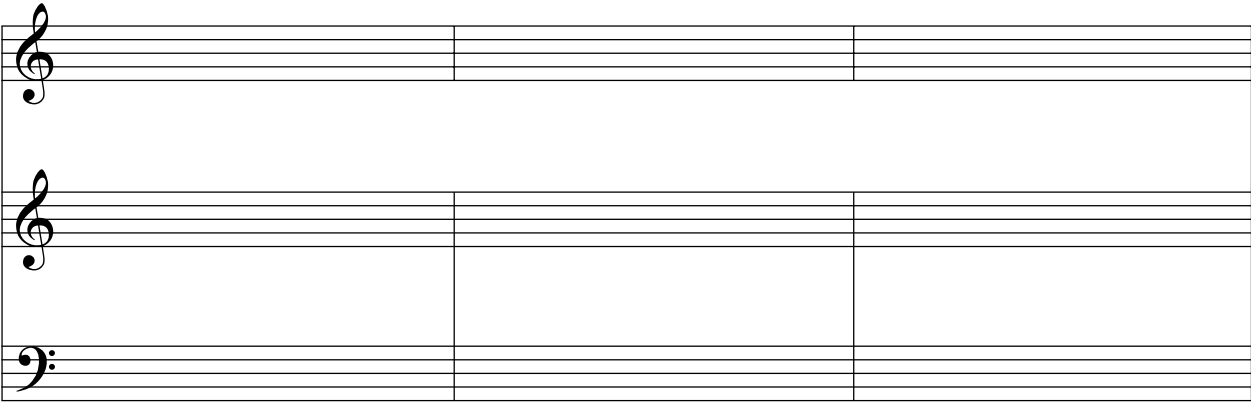
Bb Tpt.

Pno.

Bb Tpt.

Pno.


Bb Tpt.



Pno.

This block contains the first system of a musical score. It features a single staff for the Bb Trumpet (Bb Tpt.) with a treble clef. To its left is a brace grouping two staves for the Piano (Pno.), one with a treble clef and one with a bass clef. The system is divided into three measures by vertical bar lines.

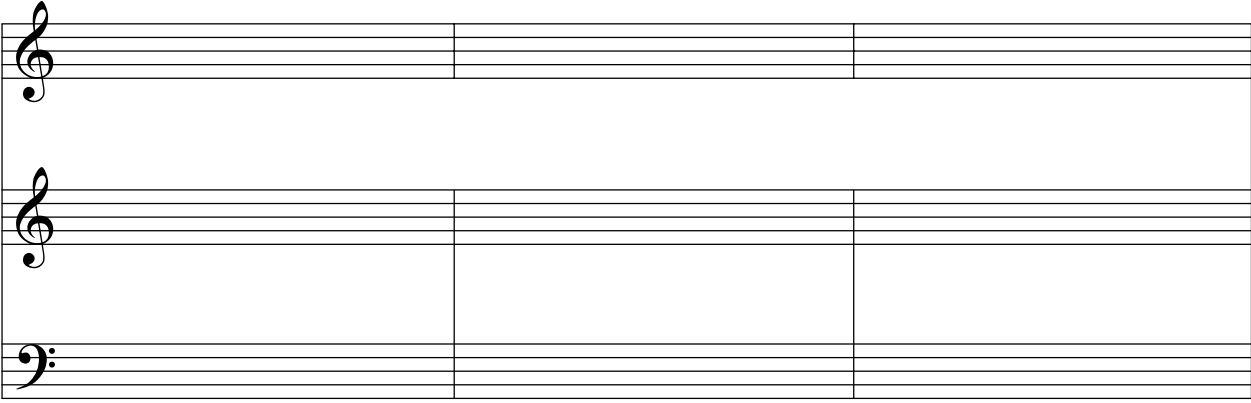
Bb Tpt.



Pno.

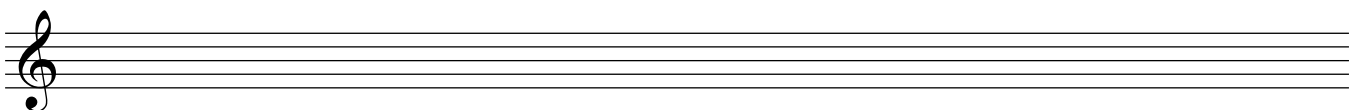
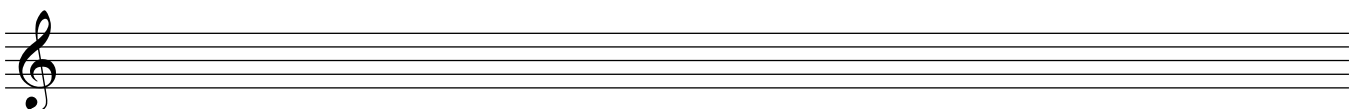
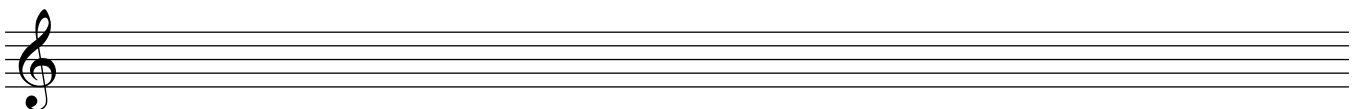
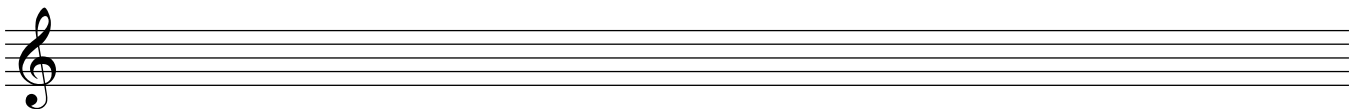
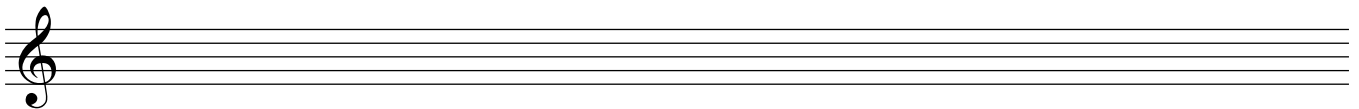
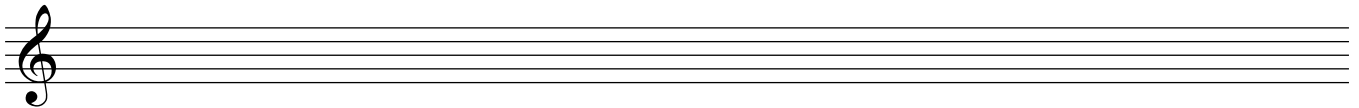
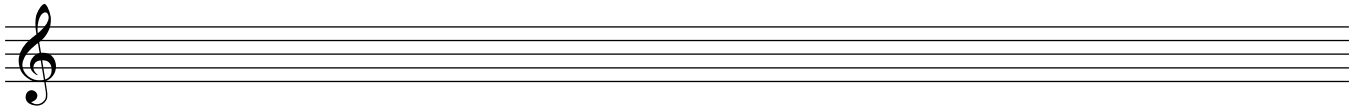
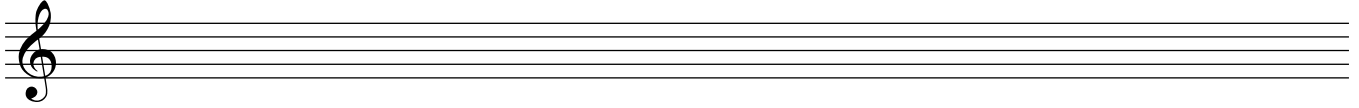
This block contains the second system of a musical score, identical in layout to the first system. It features a single staff for the Bb Trumpet (Bb Tpt.) with a treble clef. To its left is a brace grouping two staves for the Piano (Pno.), one with a treble clef and one with a bass clef. The system is divided into three measures by vertical bar lines.

Bb Tpt.



Pno.

This block contains the third system of a musical score, identical in layout to the first two systems. It features a single staff for the Bb Trumpet (Bb Tpt.) with a treble clef. To its left is a brace grouping two staves for the Piano (Pno.), one with a treble clef and one with a bass clef. The system is divided into three measures by vertical bar lines.



Trumpet in Bb 1

Trumpet in Bb 2

Horn in F

Trombone

Tuba

This block contains five blank musical staves for brass instruments. From top to bottom, they are: Trumpet in Bb 1 (treble clef), Trumpet in Bb 2 (treble clef), Horn in F (treble clef), Trombone (bass clef), and Tuba (bass clef). Each staff is connected to the others by a vertical brace on the left side. The staves are currently empty.

Bb Tpt. 1

Bb Tpt. 2

Hn.

Tbn.

Tba.

This block contains five blank musical staves for brass instruments. From top to bottom, they are: Bb Tpt. 1 (treble clef), Bb Tpt. 2 (treble clef), Hn. (treble clef), Tbn. (bass clef), and Tba. (bass clef). Each staff is connected to the others by a vertical brace on the left side. The staves are currently empty.

Bb Tpt. 1

Bb Tpt. 2

Hn.

Tbn.

Tba.

A five-line musical staff with a treble clef and a B-flat key signature. The staff is empty.

Bb Tpt. 1

Bb Tpt. 2

Hn.

Tbn.

Tba.

A five-line musical staff with a treble clef and a B-flat key signature. The staff is empty.

